

2026

EN

The BovIntel logo features a stylized 'B' with a rainbow-colored arc above it, followed by 'ovIntel' in a grey sans-serif font. The entire logo is enclosed within a large, thin grey circle that is partially cut off at the bottom by a thick red arc.

BovIntel

BovIntel
Quick
Start
Guide



BovIntel is our assisted identification of structures for the bovine fertility diagnosis. It runs on Easi-Scan:Go exclusively. Please find below how to benefit from it quickly and simply.

1. What do I need to benefit from BovIntel?

What equipment do I need to use BovIntel?

- An IMV Easi-Scan:Go classic (BovIntel not available on Lite)
- An Android or iOS smartphone or tablet
- The latest version of the Go-Scan App from App Store or Google Play.
- The latest version of scanner and BUG firmware (see below)



2. How to upgrade my scanner firmware?

- The scanner battery needs to be >50%
- Download the latest version of the IMV Go Scan App and open the app whilst connected to a WiFi source
- Connect your smart device to the Easi-Scan:Go
- The App will ask you if you want to update the scanner firmware

For any other questions on the Easi-Scan:Go, please refer to the product user manual.



3. How to upgrade my BUG firmware?

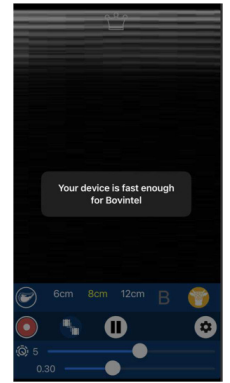
- The BUG battery needs to be >50%
- Download the latest version of the IMV Go Scan App and open the app whilst connected to a WiFi source
- Connect the BUG to the scanner
- Then connect your smart device to the scanner
- The app will ask you if you want to update the BUG's firmware

For any other questions around BUG, please refer to the user manual.

4. How do I activate BovIntel Freemium on my scanner

Your scanner & BUG's firmware are now updated. You can now activate BovIntel by accepting the BovIntel **90 day Free Trial**, just by clicking on the BovIntel button. If the button is yellow it means BovIntel is running. A hardware performance test will be done by the App to check if your smartphone or tablet is fast enough.

The app will register your Free Trial automatically.



5. How to I activate BovIntel Premium on my scanner?

Once your 90-day free trial has expired (the app will remind you 5 days before), you can subscribe to BovIntel with one of our subscription options. For that, the app will invite you to the BovIntel website www.imv-technologies.com/bovintel, or you can connect directly to it independently from the app.

From the BovIntel website or directly with this link <https://licensing.bcftechnology.com> you will be able to connect to the IMV License Server with your email as ID and select a subscription:

- Log in to the IMV License Server with your email associated with your scanner
- Select the scanner you want to use with BovIntel, based on the scanner's serial number (found behind the battery)
- Select the service offer you prefer and follow the payment instructions
- Once the payment is confirmed by the License Server, you can update your scanner's license through opening the App when connected to the internet

If any issue when connecting to the License Server please be sure to use the right email address. If this is incorrect, please contact our Customer Care team.

6. How can I use BovIntel through the app?

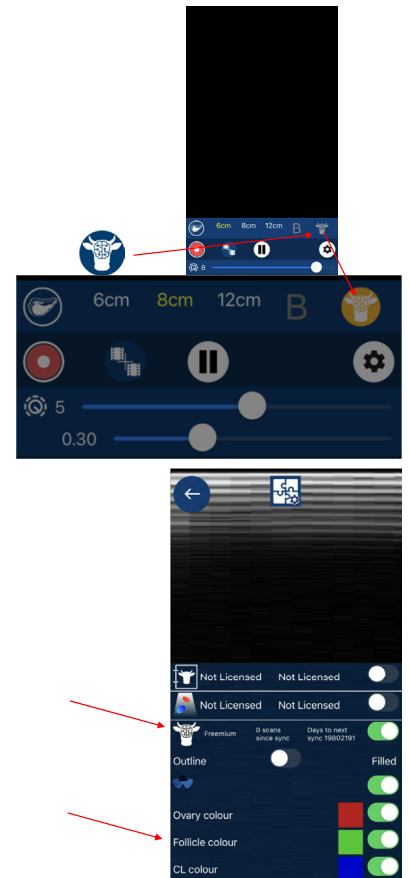
BovIntel is powered by the app, not the scanner or the BUG. So, you must connect your scanner to your app to turn BovIntel on.

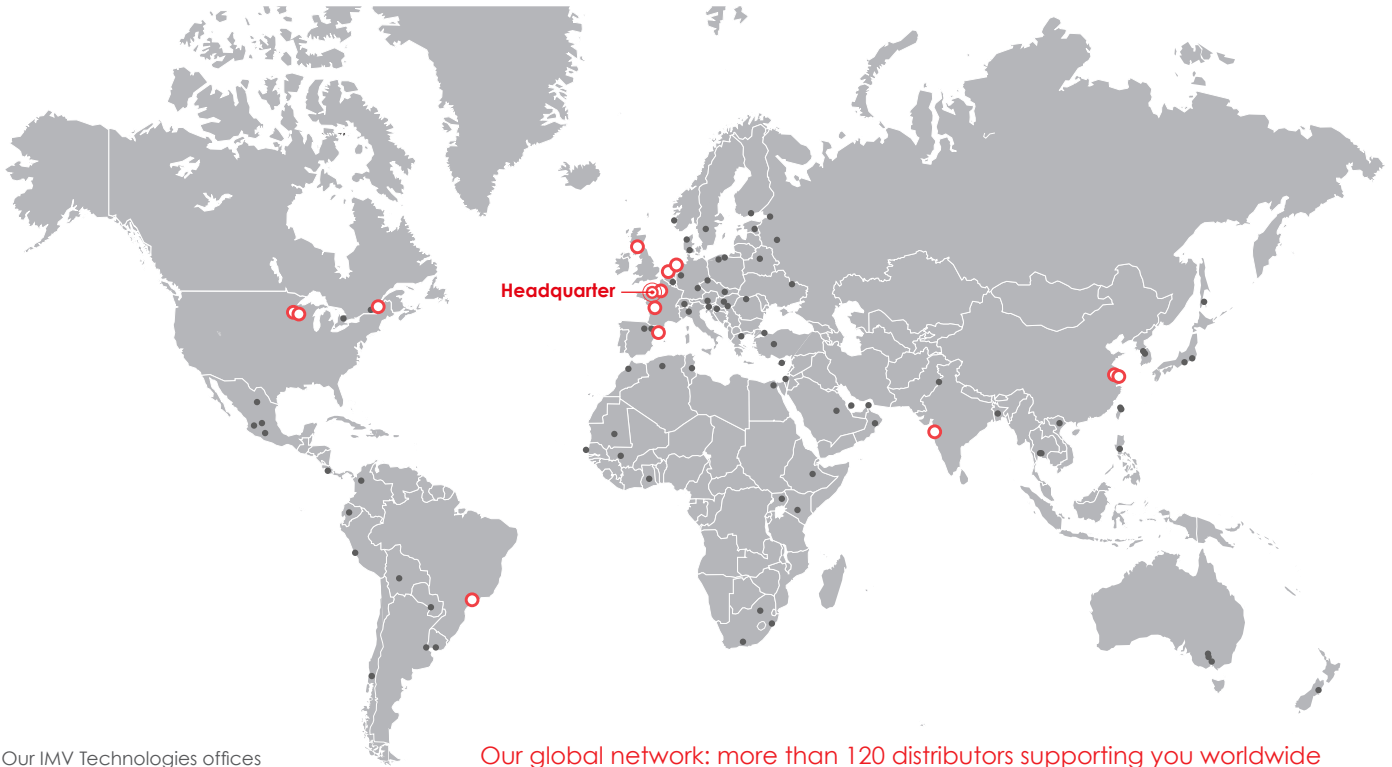
To activate BovIntel: on the main screen menu, click on the "brained cow" to activate or deactivate the service, when the button is yellow it means BovIntel is running.

You can **change the colours** of the structures' identification by going to the parameters' menu.

You can check **your license and number of scans** (if block options) by going to the same parameters' menu:

For any other questions around BovIntel, please refer to our website www.imvtechnologies.com/bovintel, contact our Customer Care team or your Sales contact.





- Our IMV Technologies offices
- Main distributors

Our global network: more than 120 distributors supporting you worldwide

France

◎ **IMV Technologies Headquarters**
 +33 2 33 34 64 64
 61300 - L'Aigle
 welcome@imv-technologies.com

IMV imaging

16000 - Angoulême
 france@imv-technologies.com

Polysem

78120 - Rambouillet
 welcome@imv-technologies.com

The Netherlands

Leja
 Nieuw-Vennep - 2153 GN - North Holland
 info@leja.nl

NIFA Technologies

Leeuwarden - 8938 AS - Friesland
 www.nifa.nl

Scotland

IMV Technologies UK
 Bellshill - ML4 3NJ - North Lanarkshire

Spain

Imporvet
 Barcelona - 08540 Centelles - Catalonia
 int@import-vet.com

United States

IMV Technologies USA
 Brooklyn Park - 55445 - Minnesota
 contact@imvusa.com

IMV Technologies USA

Rochester - 55901 - Minnesota
 info@imvusa.com

Canada

Ro-main
 Saint-Lambert-de-Lauzon
 G0S 2W0 - Quebec
 info@ro-main.com

Brazil

IMV Technologies Brazil
 Campinas - 13030-300 - Sao Paulo
 contato@imvbrasil.com.br

China

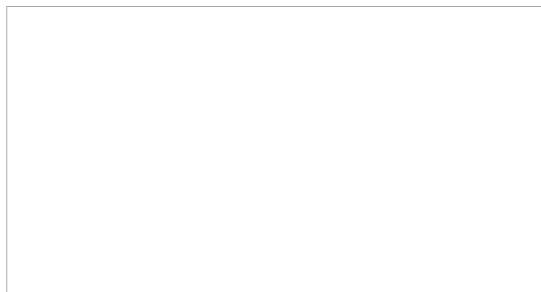
IMV Technologies China
 201203 - Shanghai
 contact@imvchina.com

Nelson Techno Medical Co

Changzhou - Jiangsu - China
 contact@imvchina.com

India

IMV Technologies India
 Mumbai - 122016 - Maharashtra
 contact@imvindia.com



www.imv-technologies.com